

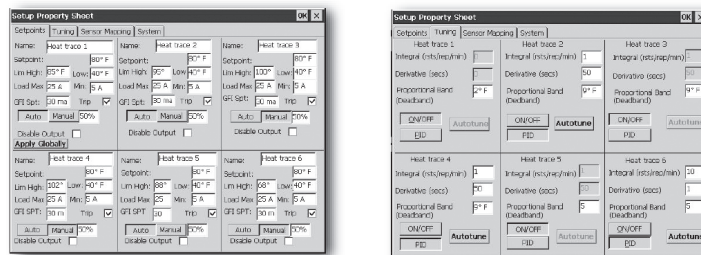
# Heating Cable

## intelliTRACE®

### ITLS

## Heat Tracing Control Panel 6 to 36 Loops - Line Sensing

- 10" VGA Touch Screen HMI
- NEMA 4 Enclosure
- SCR Control
- Integral Circuit Panel with Circuit Breakers
- 40 Amps/Loop @ 100 – 480 VAC
- Expandable to 72 Loops (with ITLS-EXT Extension Panels)
- Optional Main Disconnect
- Soft Start Feature
- Full Communications
- Enhanced Data Logging
- Complete GFI Monitoring & Alarms
- Load Monitoring & Alarms
- Full Alarm Capabilities
- Optional NEMA 4X
- Optional Customizable I/O Mapping
- Optional Enclosure Heater
- UL, cUL, CE, FM
- Touch Screen Computer:
  - 6 Loops displayed / screen
  - Quick launch to any 6 loop group, Setup Menu or System Screen
  - Remote Desktop Monitoring
  - Full User Setting Capabilities



The 10" Touch Screen Computer provides real time display of process variable, set point, load current, load demand (%), operation mode type, alarm status and alarm type for any 6 loops at time as well as alarm status for all other loops.

The Quick Launch buttons take you to any other 6-loop real time display screen as well as the Setup, Fault, Log or Communication Screen. All set point, alarm, security, time, loop identification, I/O mapping, tuning, communications and control type mode settings are easily accomplished through the intuitive & familiar Windows based menu screens. All of these functions are achievable locally or remotely via wired or wireless communications.

### Description

The IntelliTRACE ITLS Series is a micro-processor based Control/Monitoring and Power Management & Distribution system for Heat Trace Applications.

The ITLS Control Panel Series provides alarms for high / low temperatures, high/low current, ground fault leakage and sensor faults.

The 40 Amps per circuit capacity, the Integral Circuit Panel and the Soft Start feature save significant time, installation and maintenance costs.

The customizable I/O (Sensor) Mapping, the remote monitoring capability and the wireless communication option provide desirable process management flexibility options.

### Technical Specifications

**Supply Voltage:** 100 - 480 VAC, 3 phase

**Operating Environment:** -40 to +104°F (-40 to +40°C)

**Communications:** RS-485 MODBUS®, Ethernet & Optional Wireless

**Alarms:** Hi/Lo Temp, GFI – 6mA – 150 mA, adjustable Current – 0.1 to 100A or off, indication & annunciation

**Input:** 100Ω Platinum 3-wire RTD

**Output:** SCR, Zero cross fired

**Current Maximum:** 40 Amps/Circuit

**Auto-Cycle:** 1 – 999 hours/off

**Failed Sensor Output Setting:** 0 – 100%

**Control Mode:** On/Off with adjustable dead-band

**Load Management:** DOT (Demand On Transfer) timing, with Soft Start

MULTI LOOP  
CONTROL PANEL

# Heating Cable

## ITLS

### Heat Tracing Control Panel 6 to 36 Loops - Line Sensing

(cont'd.)

#### Ordering Information

To Order —  
Complete the  
Model Number  
using the Matrix  
provided.

#### Model Product Description

**ITLS** ITLS series Intelligent Line Sensing Heat Trace Panel. Designed for Industrial applications in Non-Hazardous Areas. ITLS series offers the following standard features: NEMA 4 enclosure, Industrial 10" Digital CE Computer Touchscreen Operator Interface, PID SCR Power Controller Rated at 40A Per Circuit at 104°F Ambient, Six to Thirty-Six Circuits (Expandable to Seventy-Two Circuits\*), Common Alarm Output, Hand/Off/Auto Operation, Current Monitoring, 30 mA Ground Fault Equipment Protection, RS485 ModBus / Ethernet Communications, Remote Code Circuits & Enclosure Monitoring Capability, Modular SSR/GFI assembly, Modular RTD Sensor assembly, UL & cUL Third Party Compliance. Options Include: NEMA 4XSS Enclosure, Thermostat Controlled Enclosure Heater, Customized Sensor Mapping, 15" Touchscreen Operator Interface, Wireless Ethernet Communications, CE Third Party Compliance.

Code	Circuits &	Enclosure Size	Panelboard Size	Panelboard Rating
06	6 Circuits	48"H x 36"W x 12"D	18 position panel board	100A Main Bus Rating
12	12 Circuits	48"H x 36"W x 12"D	30 position panel board	225A Main Bus Rating
18	18 Circuits	60"H x 36"W x 12"D	42 position panel board	225A Main Bus Rating
24	24 Circuits	62"H x 60"W x 12"D	30 position panel board (X2)	225A Main Bus Rating
30	30 Circuits	62"H x 60"W x 12"D	42 position panel board (X2)	225A Main Bus Rating
36	36 Circuits	62"H x 60"W x 12"D	42 position panel board (X2)	225A Main Bus Rating

Code	Line Voltage	Cable Voltage	Circuit Breaker Rating - Type (1/Loop)
1	208/120 VAC, 3 Phase 4 Wire	120 VAC	120V-1 Pole
2	208/120 VAC, 3 Phase 4 Wire	208 VAC	208/240V-2 Pole
3	240/120 VAC, Single Phase 3 Wire	240 VAC	208/240V-2 Pole
4	480/277 VAC, 3 Phase 4 Wire	277 VAC	277-1 Pole
5	480/277 VAC, 3 Phase 4 Wire	480 VAC	480V-2 Pole

Code	Cable Load Rating	Circuit Breaker Rating
1	15A	Thermal Magnetic
2	20A	Thermal Magnetic
3	30A	Thermal Magnetic
4	40A	Thermal Magnetic
5	50A	Thermal Magnetic

Code	Main Disconnect / Circuit Breaker Rating
0	None
1	100A Thermal Magnetic
2	150A Thermal Magnetic
3	225A Thermal Magnetic
4	250A Thermal Magnetic
5	400A Thermal Magnetic
6	600A Thermal Magnetic

Code	Enclosure
1	NEMA 4 Single-Door Wall-Mount Steel Enclosure
2	NEMA 4X 304 Stainless Steel Wall-Mount Enclosure 48"H x 36"W x 12"D
3	NEMA 4X 304 Stainless Steel Wall-Mount Enclosure 60"H x 36"W x 12"D
4	NEMA 4X 304 Stainless Steel Floor Mount Enclosure 62"H x 60"W x 12"D

Code	Enclosure Heater
0	No Enclosure Heater
1	Thermostat Controlled Enclosure Heater (Anti-Condensation Heater)
2	Thermostat Controlled Enclosure Heater (to 0°F Ambient)
3	Thermostat Controlled Enclosure Heater (to -40°F Ambient)

Code	Customized Sensor Mapping
0	No capability
1	Field Customized Capability
2	Factory Programmed, Field Customizable

Code	Display/Communications Selection
0	Standard 10" Display
1	Standard 10" Display & Wireless Ethernet
2	15" Display
3	15" Display & Wireless Ethernet

ITLS- 24 1 3 1 1 1 1 0 Typical Model Number